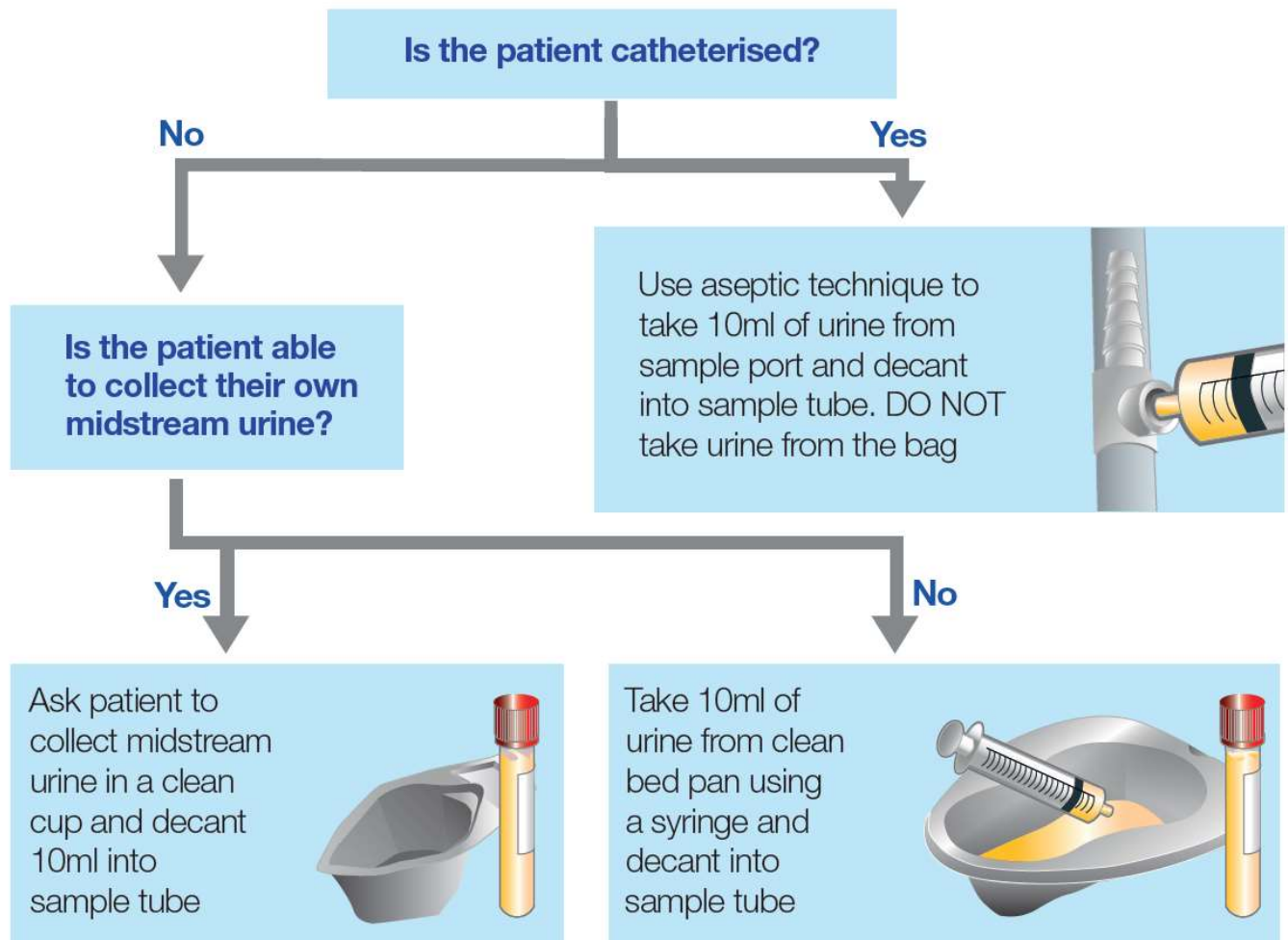




Collecting Urine Samples for Microbiology

Please only send urines to microbiology from patients with signs and symptoms of UTI



Please check:

Lid is secure. Two matching patient identifiers on form AND sample bottle. Sample type and test required stated on form

Use boric acid red top tube if not sending immediately

-The correct boric acid concentration preserves the sample quality while it's on its way to the laboratory

Must be filled to line with urine



Under-filled bottles will be REJECTED

For less than 10ml and paediatric samples use a white top tube

-Minimum urine volume for white top is 5ml
-If unable to send immediately please refrigerate sample

