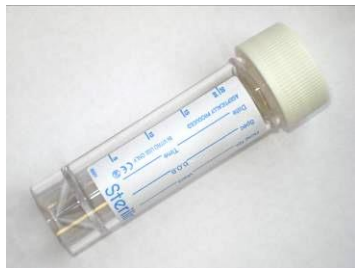




Microbiology Sample Containers

a guide for sending samples to
the UKHSA Public Health Laboratory, Birmingham



20ml Sterile Universal

- Fluids, Aspirates and Tissues
- Sputum and BAL
- CSF
- Urines for legionella antigens
- Urines for TB or Virology



20ml Blue Top with Spoon

All faeces samples
5ml minimum



Viral Transport Swabs (Green Top)

All virology swabs including swabs for respiratory viruses (e.g. flu), vesicle and genital swabs
Not suitable for bacterial / fungal culture (MC&S)



APTIMA Swab

Chlamydia and gonorrhoea molecular test



Red Top Blood Tube for Serum

All serology tests



10ml Urine Tubes

Urines for culture (MC&S) ONLY
Use boric red top if possible
Fill to line



Liquid eSwab (Pink Top)

Culture (MC&S) for bacteria / fungi, including throat swabs, wound swabs and HVSs.
Please use green viral transport swabs for virology (e.g. flu)



Dual Liquid Swabs (Pink Top)

For emergency MRSA nose and groin screening ONLY



APTIMA Urine Tube

Chlamydia and gonorrhoea molecular test
Please fill to between lines



Purple Top EDTA Blood Tube

All molecular (DNA and RNA) microbiology and virology blood tests including isoniazid assay levels

Sending checklist:

Sample

- ☐ Right sample type
- ☐ Right pot – sufficiently filled
- ☐ Sufficient volume
- ☐ Lid on tight (nothing leaking)
- ☐ Patient Identification:
TWO forms of identification details on the sample should match **TWO** forms of identification details on the form

Form – The following must be completed:

- ☐ Patient identifier (ensure it matches the sample pot)
- ☐ Sample type
- ☐ Sample site
- ☐ Test required
- ☐ Clinical details **MUST** be stated
- ☐ Travel History & contact with insect/livestock
- ☐ Location and person the report goes to