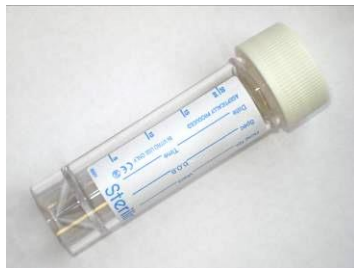




Microbiology Sample Containers

A General Practice Field Guide for sending samples to the UKHSA Public Health Laboratory, Birmingham



20ml Sterile Universal
Fluids and aspirates
Sputum
Mycology samples
Urines for legionella antigens



20ml Blue Top with Spoon
All faeces samples
5ml minimum



Viral Transport Swabs (Green Top)
All virology swabs including swabs for respiratory viruses (e.g. flu), vesicle and genital swabs
Not suitable for bacterial / fungal culture (MC&S)



APTIMA Swab
Chlamydia and gonorrhoea molecular test



Red Top Blood Tube for Serum
All serology tests



10ml Urine Tubes
Urines for culture (MC&S) ONLY
Use boric red top if possible
Fill to line



Liquid eSwab (Pink Top)
Culture (MC&S) for bacteria / fungi, including throat swabs, wound swabs and HVSs.
Please use green viral transport swabs for virology (e.g. flu)



Pernasal Swab (Blue top)
Pertussis PCR
Please send swab in the dry tube. Do not use the charcoal gel tube



APTIMA Urine Tube
Chlamydia and gonorrhoea molecular test
Please fill to between lines



Purple Top EDTA Blood Tube
All molecular (DNA and RNA) microbiology and virology blood tests

Sending checklist:

Sample

- ☐ Right sample type
- ☐ Right pot – sufficiently filled
- ☐ Sufficient volume
- ☐ Lid on tight (nothing leaking)
- ☐ Patient Identification:
TWO forms of identification details on the sample should match **TWO** forms of identification details on the form

Form – The following must be completed:

- ☐ Patient identifier (ensure it matches the sample pot)
- ☐ Sample type
- ☐ Sample site
- ☐ Test required
- ☐ Clinical details **MUST** be stated
- ☐ Travel History & contact with insect/livestock
- ☐ Location and person the report goes to